

PARADISE PINES COUNTRY CLUB ESTATES NO. 4

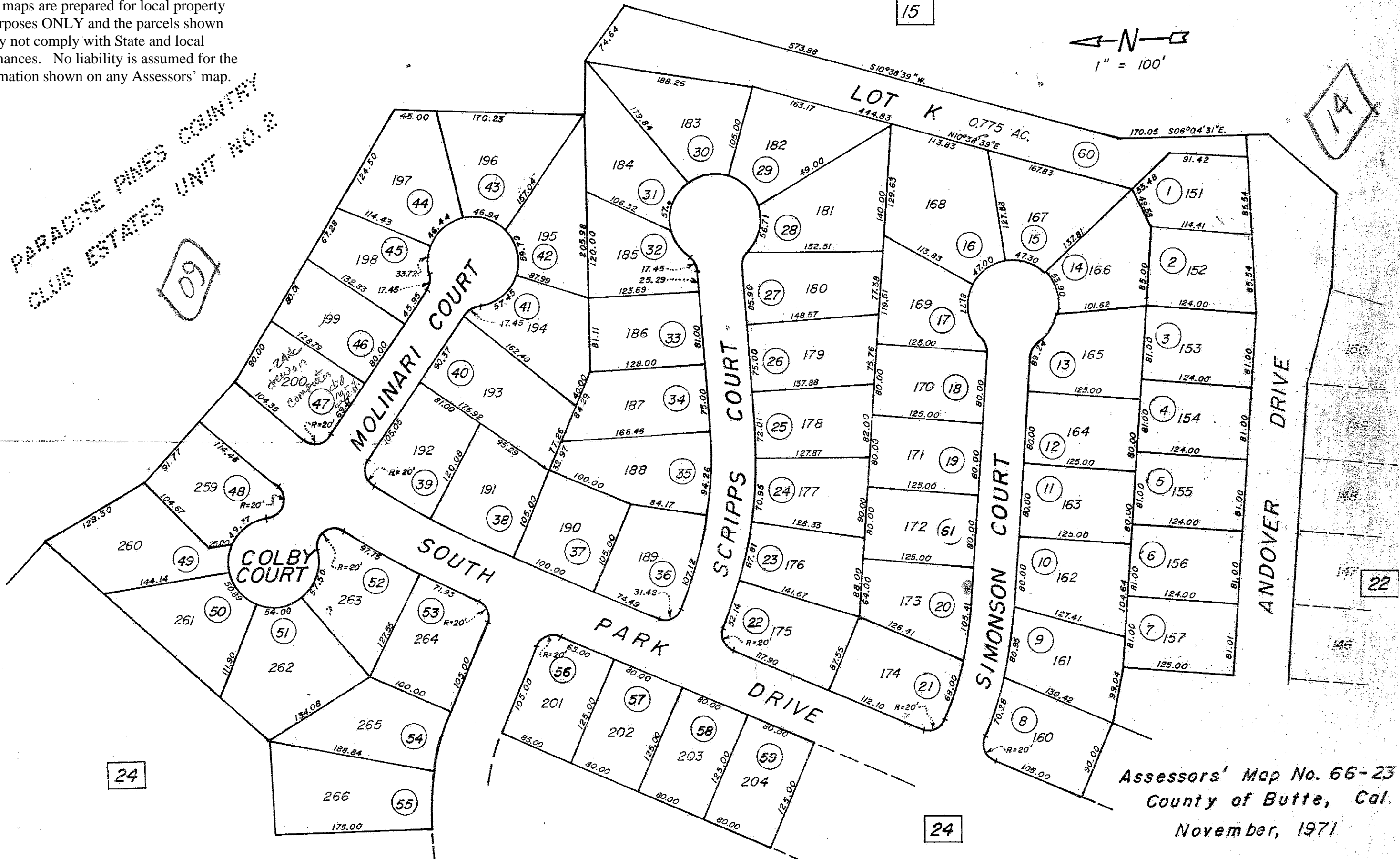
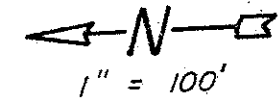
PTN. SECTION 35, T23N, R3E.

T.A. 93-22

23
66-23

All Assessors' maps are prepared for local property assessment purposes ONLY and the parcels shown thereon may not comply with State and local subdivision ordinances. No liability is assumed for the use of the information shown on any Assessors' map.

PARADISE PINES COUNTRY CLUB ESTATES UNIT NO. 4



Assessors' Map No. 66-23
County of Butte, Cal.
November, 1971